

14

DEPOSITION  
EXHIBIT  
#6  
11-4-87  
NATIONAL COURT REPORTING

from the desk of D. N. RENNEKER

February 12, 1981

To: D. E. Dawkins  
R. C. Lunn  
J. E. MacAfee

Attached are rough drafts of charts for Friday's meeting.

D. N. Renneker

1j1  
CONFIDENTIAL  
DISCLOSED BY ORDER OF THE COURT

American Motors Corporation

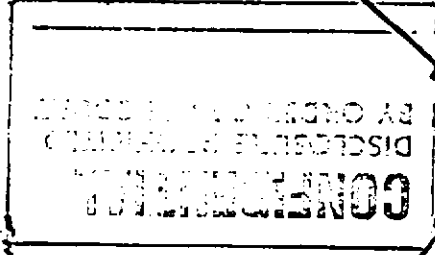
# CUSTOMER REQUIREMENTS

## DIRECTIONAL STABILITY

- INCREASE WHEELBASE (CJT)
- LOWER C.G.
- IMPROVED SWAY BARS
- VARIABLE RATIO POWER STEERING
- IMPROVED BALL JOINTS
- RETUNE SPRINGS & SHOCKS
- MINIMIZE SCRUB RADIUS

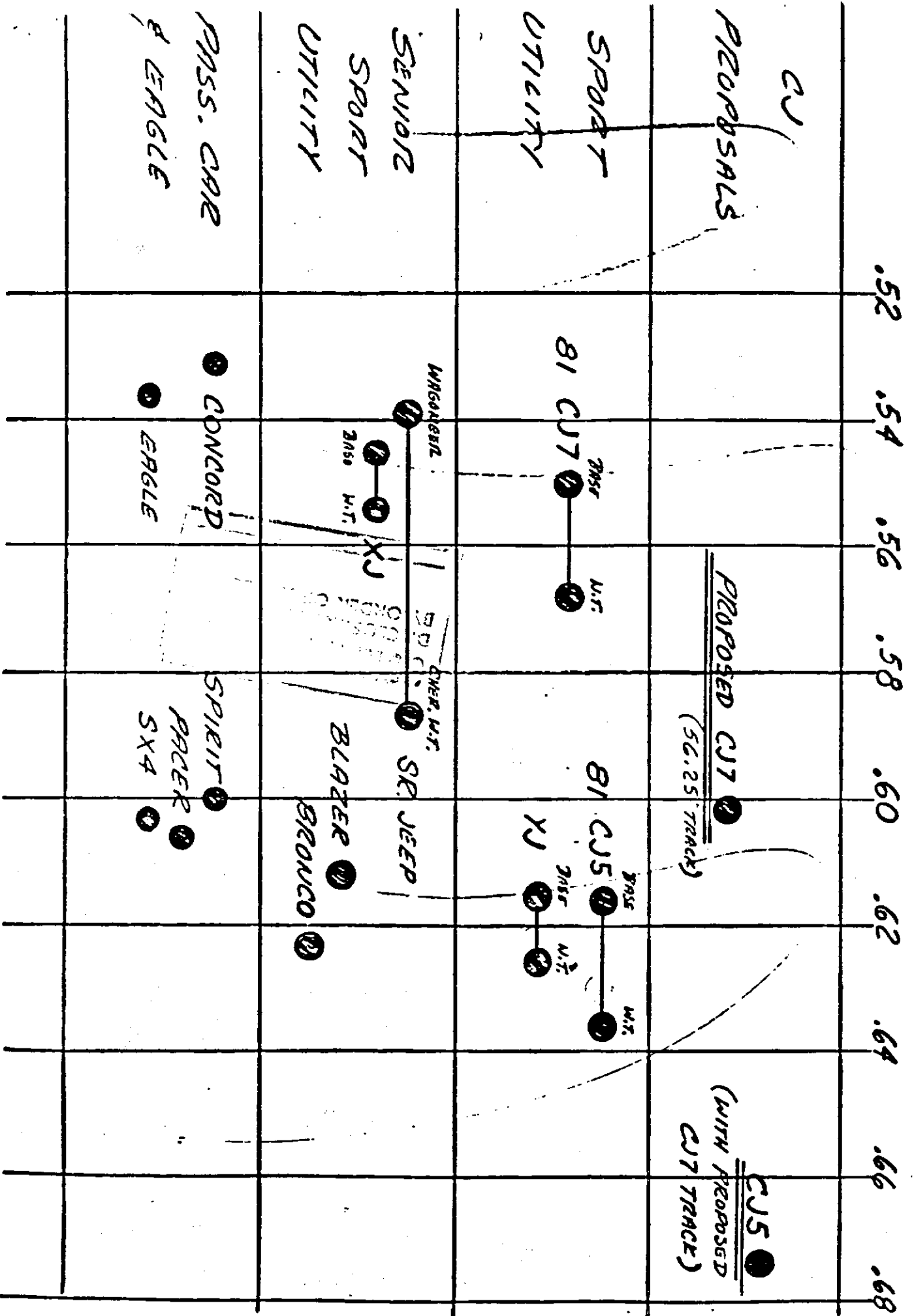
## ROLLOVER

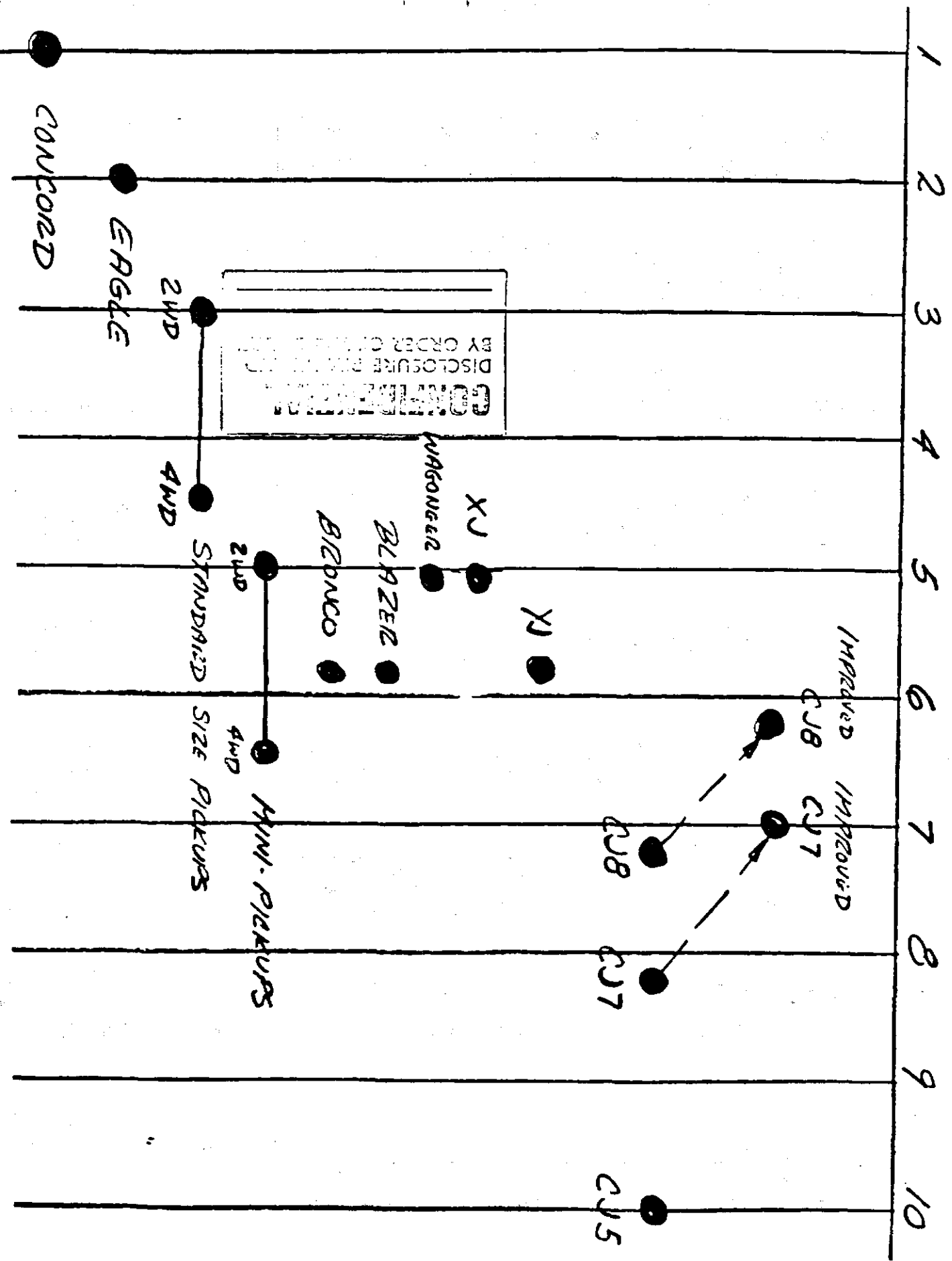
- INCREASE TRACK
- LOWER C.G.
- IMPROVED SWAY BARS



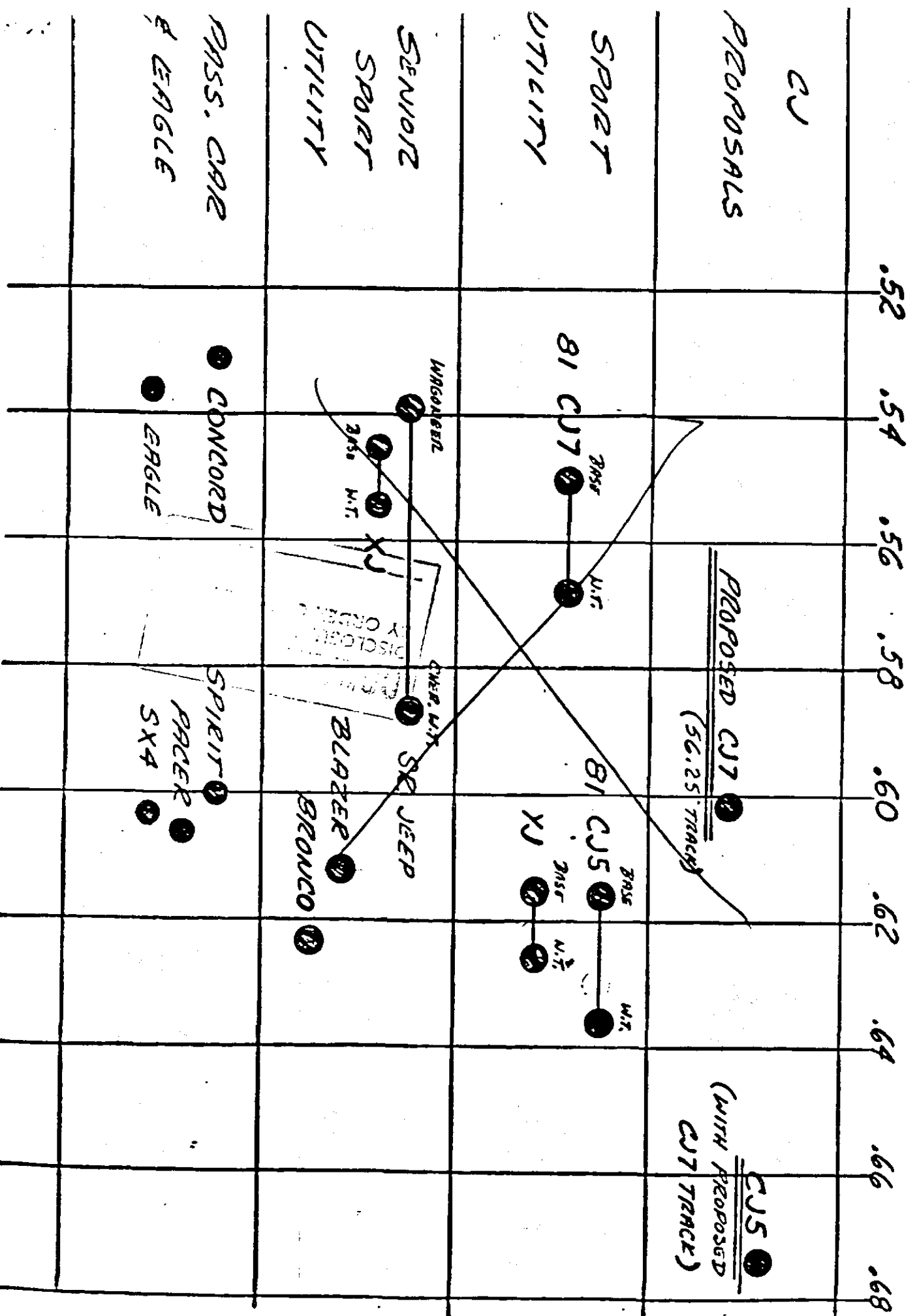
## 1982 PRODUCT CHANGES

# RELATIVE TRACK WIDTH (TRACK/W.B.)

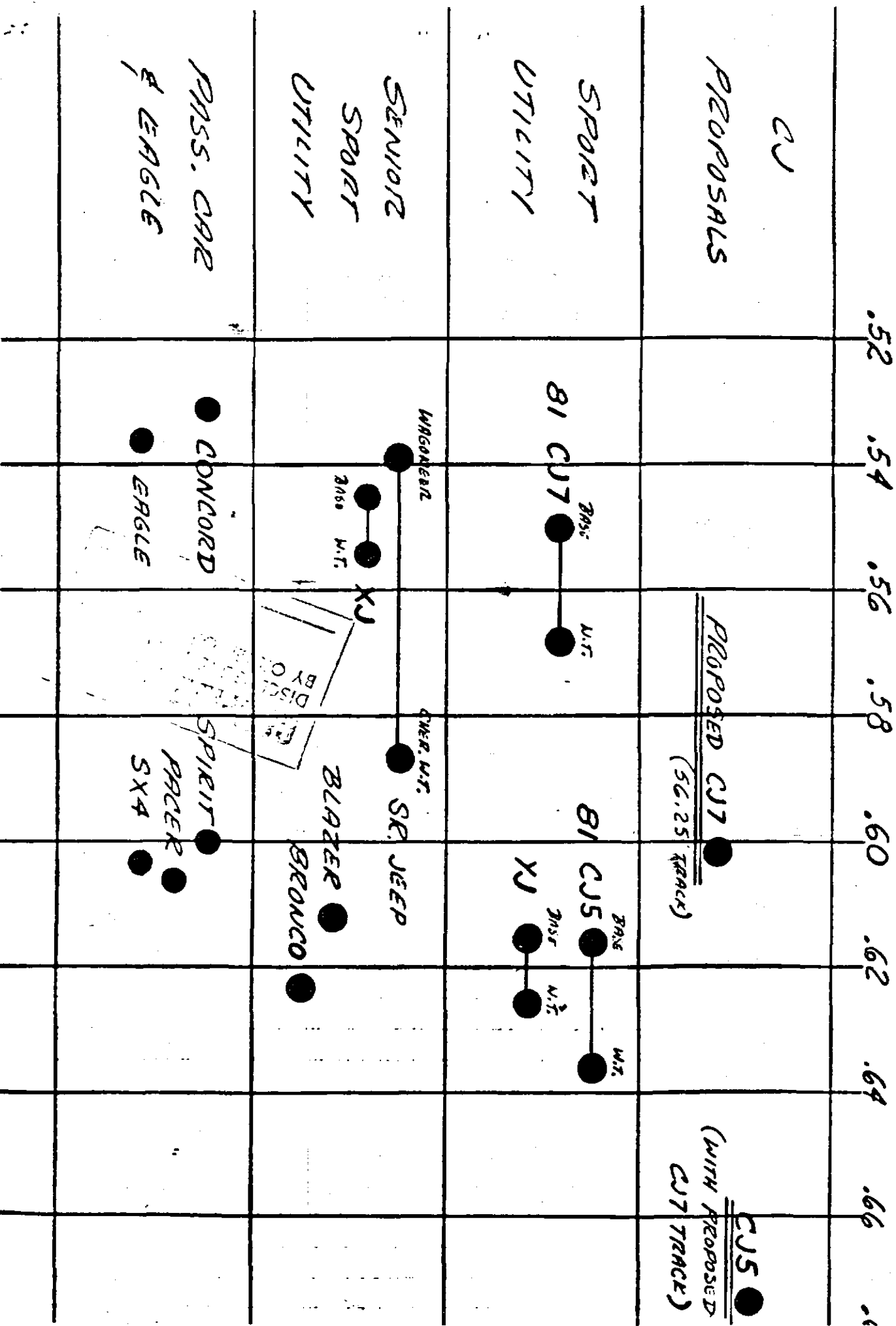




# RELATIVE TRACK WIDTH (TRACK/W.B.)



RELATIVE TRACK WIDTH (TRACK/W.B.)



# REACTIVE FOLLOWOVER TENDENCY

(REF. TO CG HEAVY TRACK X TUB.)

